

# ACCESSIBLE TRAVEL

AT GHOST MOUNTAIN INN



*For guests that require it, we have specially-designed wheelchair friendly guest rooms that offer complete accessibility and an overall comfortable experience. These rooms are situated on the ground floor, with doors wide enough for a wheelchair / mobility scooter. Should guests require accommodation with accessible facilities for physical impairment, please inform reservations when making a booking.*

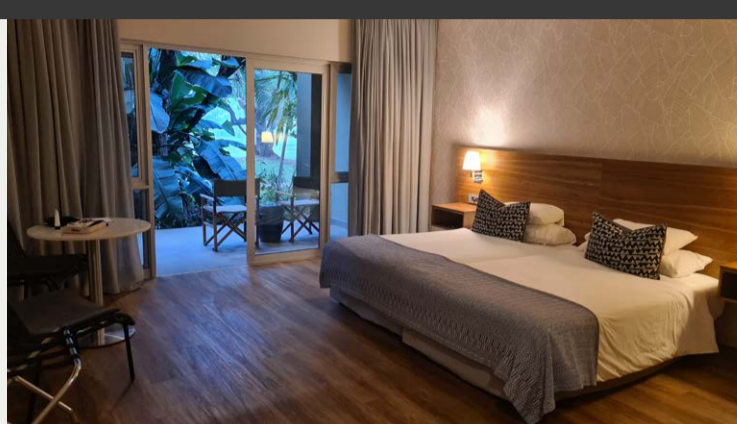
## MOUNTAIN ROOM

46m<sup>2</sup>

Newly built in 2019, this spacious room offers views from the patio across the garden. The oversized bathroom features a shower with seat and hand rails, a wall mounted sink and a handrail for the toilet. There are power-sockets near the bed for any medical equipment (CPAP, etc.).

- Twin beds
- Tea and coffee making facilities
- Safe
- Mini bar
- Satellite television
- Air-conditioning, fans, heating
- Hair dryers
- Non-smoking
- Twice-daily housekeeping
- Complimentary Wi-Fi

This room also shares a private lobby with an adjacent Mountain Room, so families and / or carer's can be conveniently accommodated.



## GARDEN ROOM

34m<sup>2</sup>

With views of the indigenous garden, Garden rooms are slightly further from the main hotel areas providing a quiet retreat. Again, the oversized bathroom features a shower with seat and hand rails, a wall mounted sink and a handrail for the toilet, making it suitable for wheelchair users. There are power-sockets near the bed for any medical equipment (CPAP, etc.).

- Twin beds
- Tea and coffee making facilities
- Safe
- Mini bar
- Satellite television
- Air-conditioning, fans, heating
- Hair dryers
- Non-smoking
- Twice-daily housekeeping
- Complimentary Wi-Fi



*Compliant with the Tourism Grading Council of South Africa (TGCSA) Universal Accessibility criteria, guests with physical and mobility difficulties can enjoy warm Zululand hospitality at Ghost Mountain Inn.*



## FACILITIES

Access to the reception, gift shop, restaurants, lounges and other public areas is possible, with accessible public ablution facilities available in the main lounge / bar area. The swimming pools feature hand rails, and steps into the water.

## ACTIVITIES

While we make reasonable efforts to accommodate the needs of disabled guests, those who need such assistance must be accompanied by a qualified companion:

- **Game Drives:** Ghost Mountain Safaris can arrange game drives into the neighbouring game reserves of uMkhuze, Hluhluwe-iMfolozi and Manyoni Private Game Reserve. With no specific adapted vehicles, interested wheelchair users will have to be lifted onto the vehicles.
- **uMkhuze Game Reserve has wheel-chair accessible hides and level pathways**
- **Lebombo Scenic Drive:** A leisurely drive up through the Lebombo Mountains through enthralling scenery, with magnificent views of Lake Jozini. With no specific adapted vehicles, interested wheelchair users will have to be lifted onto the vehicles.
- **Boat Cruises:** We have two access points for the Jozini boat trips, depending on water levels. The one is level and only requires lifting onto the boat. The other has stairs, so requires a bit more lifting.
- **Mkuze River Bird Walk:** Possible for wheelchair users who have off-road tyres, this gentle route traverses the dam in front of the hotel, into the Mkuze riverbed and along to the old weir.

## POINTS TO NOTE

- Wheelchair users with inflatable tyres are advised that thorns are a potential risk in some areas of the garden. As a precaution, spare tubes, puncture repair kits or heavy-duty tyres are recommended.
- Travelling with an inflatable back cushion with suction points is a good idea for showers and baths.
- People susceptible to extreme heat should note that summer temperatures (particularly December to February) can be extremely high.

Call: +27 (0)35 573 1025 • Email: [escape@ghostmountaininn.co.za](mailto:escape@ghostmountaininn.co.za) • [www.ghostmountaininn.co.za](http://www.ghostmountaininn.co.za)

Share your experience! @ghostmtn @ghostmtn ghostmountain