

Global coordinates: 0°15'6.60"N
37°23'14.70"E

Altitude: 6,000ft.

Rainfall: Approximately 360mm per year.

Climate: Warm days, chilly nights, no humidity.

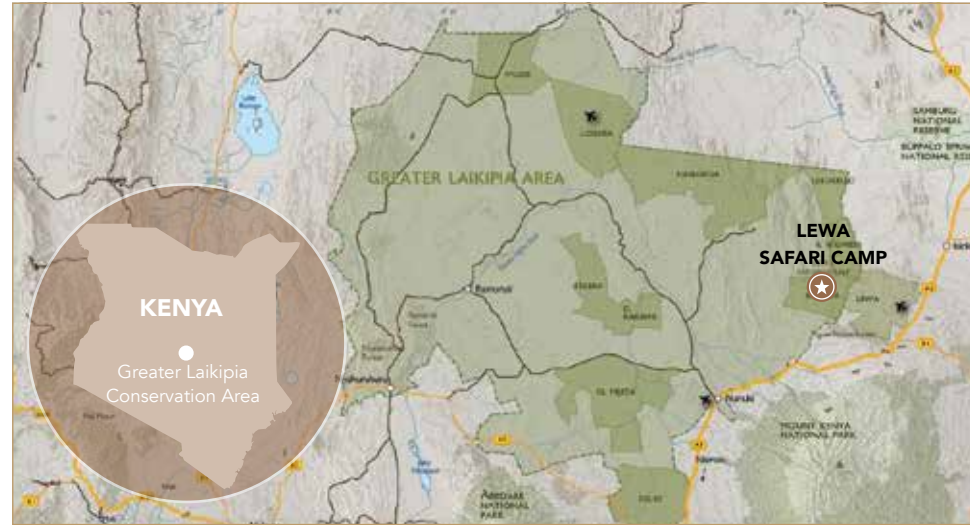
HOW TO GET THERE

Lewa Main Airstrip is a 40-minute drive from the camp.

- Once daily scheduled Air Kenya flight departing Nairobi Wilson at 09h15
- Twice-daily scheduled Safari Link flight departing Nairobi Wilson at 08h00 and 10h20
- Private charters from anywhere.
Note – Lewa Conservancy has very strict vehicle rules and only authorised vehicles are allowed within the Conservancy. Visitors arriving by road have to be collected from the Conservancy headquarters
- Road directions available on request

LOCATION

Lewa Safari Camp is an integral part of the Lewa Wildlife Conservancy, an immensely successful wildlife conservation area within the Laikipia Plateau. With large tented bedrooms all with private verandas and en suite facilities, the landscaped gardens and cosy log fires make it a beautiful and homely retreat.



ACCOMMODATION & FACILITIES

- 11 en suite safari tented rooms (twin & double configurations)
- 2 Family Suites (each with 1 double room and 1 twin room each with en suite bathrooms)
- Lounge with log fires
- Swimming pool, massage room and gift shop
- Free wifi available in all public areas
- Gold level eco-rating

DINING EXPERIENCE

- Dining times are as follows:
Breakfast: 06h30 to 09h30
Lunch: 13h00 to 14h30
Dinner: 20h00 to 21h30
Individual dietary requests can be satisfied with advance notice
- Dining area with log fires
- Restaurant & terrace
- Bush breakfasts, sundowners & picnic lunches
- Selected premium wine list

ENCOUNTERS

- Game drives within the Lewa Wildlife Conservancy
- Custom-designed, open-sided, 4 wheel-drive game-viewing vehicles
- Views of Mount Kenya and access to Ngare Ndare Forest
- Guided bush walks with professional guides & wildlife rangers
- Horse riding
- Camel trekking
- Visits to community projects & educational programs

ELECTRICITY

- Lewa Safari Camp runs on solar inverter batteries and a generator. Generator hours are from 06h00- 09h00, 14h00-15h00 & 18h30-22h00
- All tents have power 24 hours a day for lighting
- Guest batteries can be charged in the tents (one socket) and in the office.
- All game-viewing vehicles have inverters allowing battery charging whilst on game drives
- All tents run on a solar inverter system, which cannot support hair dryers
- Guests are recommended to bring their own plug adaptors

PAYMENT OPTIONS (AT CAMP)

Cash (US\$ newer than 2006, Euro, Sterling, KSH), Credit cards accepted. No Debit cards, no travellers cheques.