

DELAIRE
GRAFF
 LODGES & SPA

THE LODGES & SPA

Layout Key

- DELUXE LODGES (GARDEN VIEWS) A
- LUXURY LODGES (MOUNTAIN & VALLEY VIEWS) B
- SUPERIOR LODGES (VINEYARD VIEWS) C
- PRESIDENTIAL LODGE 1 (VALLEY VIEW) D
- PRESIDENTIAL LODGE 2 (VALLEY & MOUNTAIN VIEW) E
- THE OWNER'S VILLA (VALLEY & MOUNTAIN VIEW) F
- MAIN POOL & TERRACE G
- DELAIRE GRAFF SPA H
- RECEPTION & GUEST RELATIONS I
- INDOCHINE RESTAURANT J

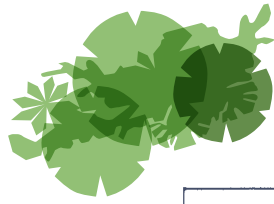





 DELAIRE
GRAFF
 LODGES & SPA

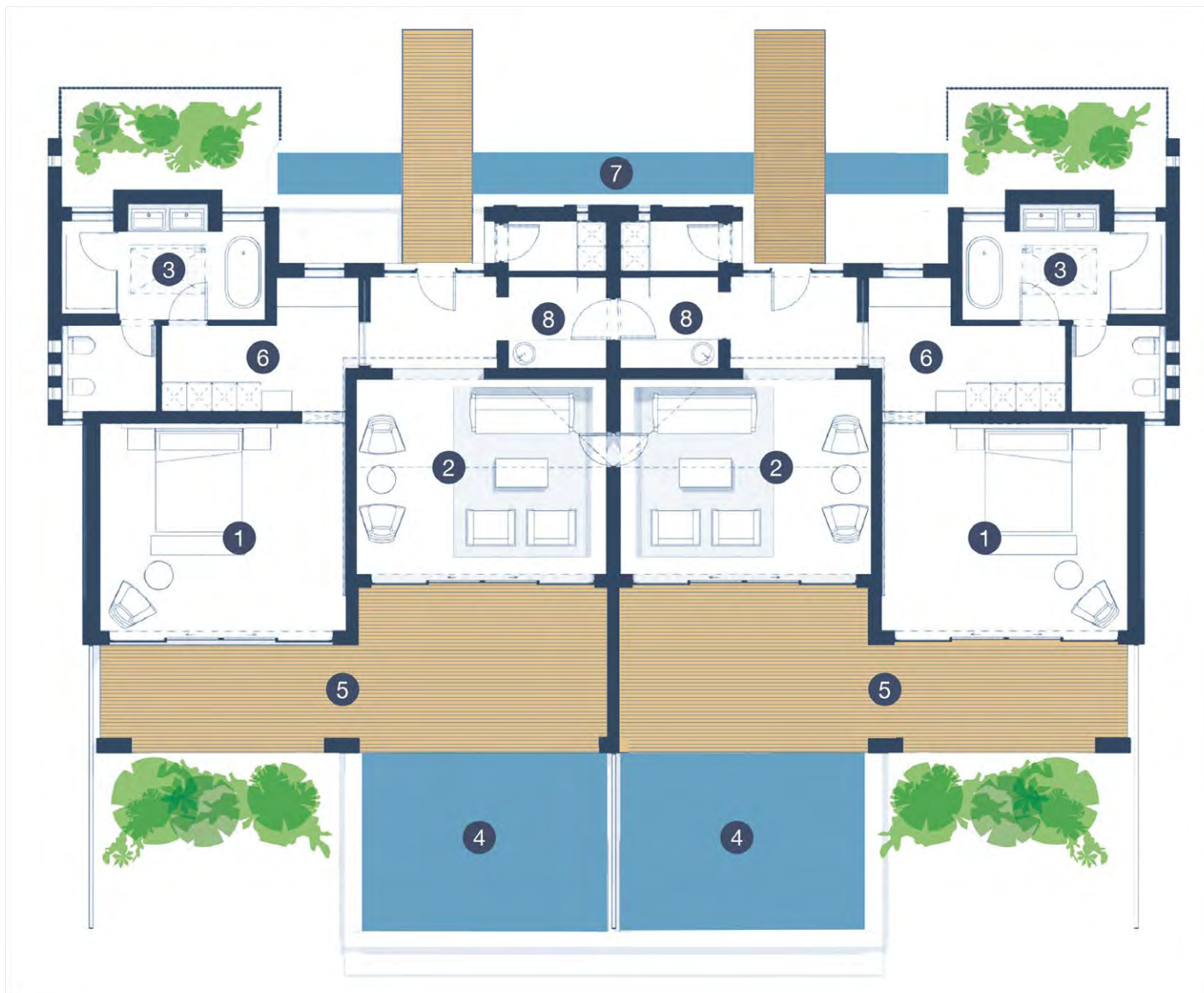
DELUXE LODGE

- | | |
|----------------------------|--------------------|
| ① Bedroom | ⑧ Butler's kitchen |
| ② Living room | ⑨ Pond |
| ③ En-suite bathroom | ⑩ Mini bar area |
| ④ Private heated pool | ⑪ Shower |
| ⑤ Pool terrace | ⑫ Bath |
| ⑥ Entrance | ⑬ WC |
| ⑦ Dressing room and closet | ⑭ Garden Views |



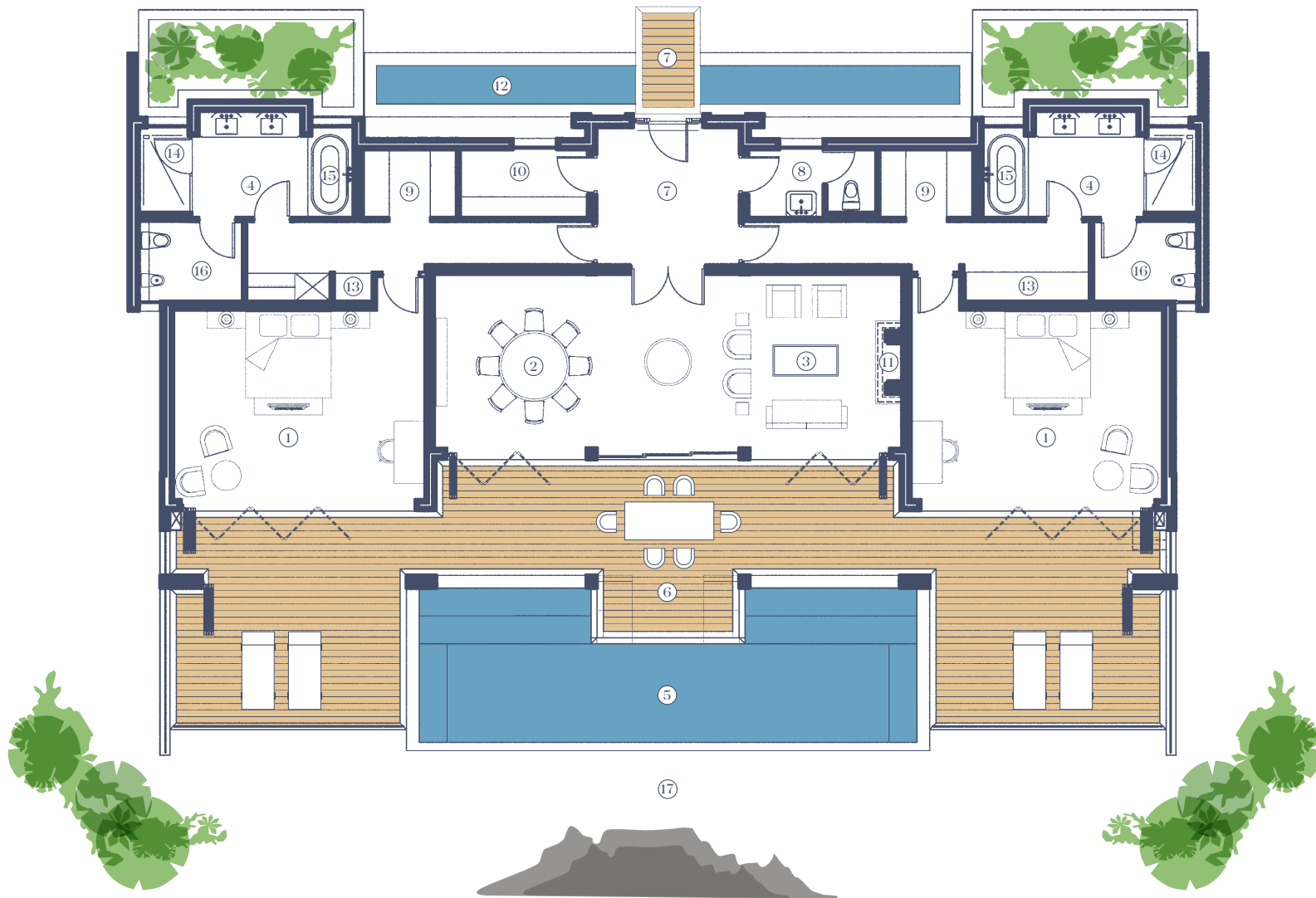
DE LAIRE
GRAFF
LODGES & SPA
LUXURY LODGE

- | | |
|----------------------------|-------------------------------|
| ① Bedroom | ⑧ Butler's kitchen |
| ② Living room | ⑨ Pond |
| ③ En-suite bathroom | ⑩ Mini bar area |
| ④ Private heated pool | ⑪ Shower |
| ⑤ Pool terrace | ⑫ Bath |
| ⑥ Entrance | ⑬ WC |
| ⑦ Dressing room and closet | ⑭ Vineyard and mountain views |



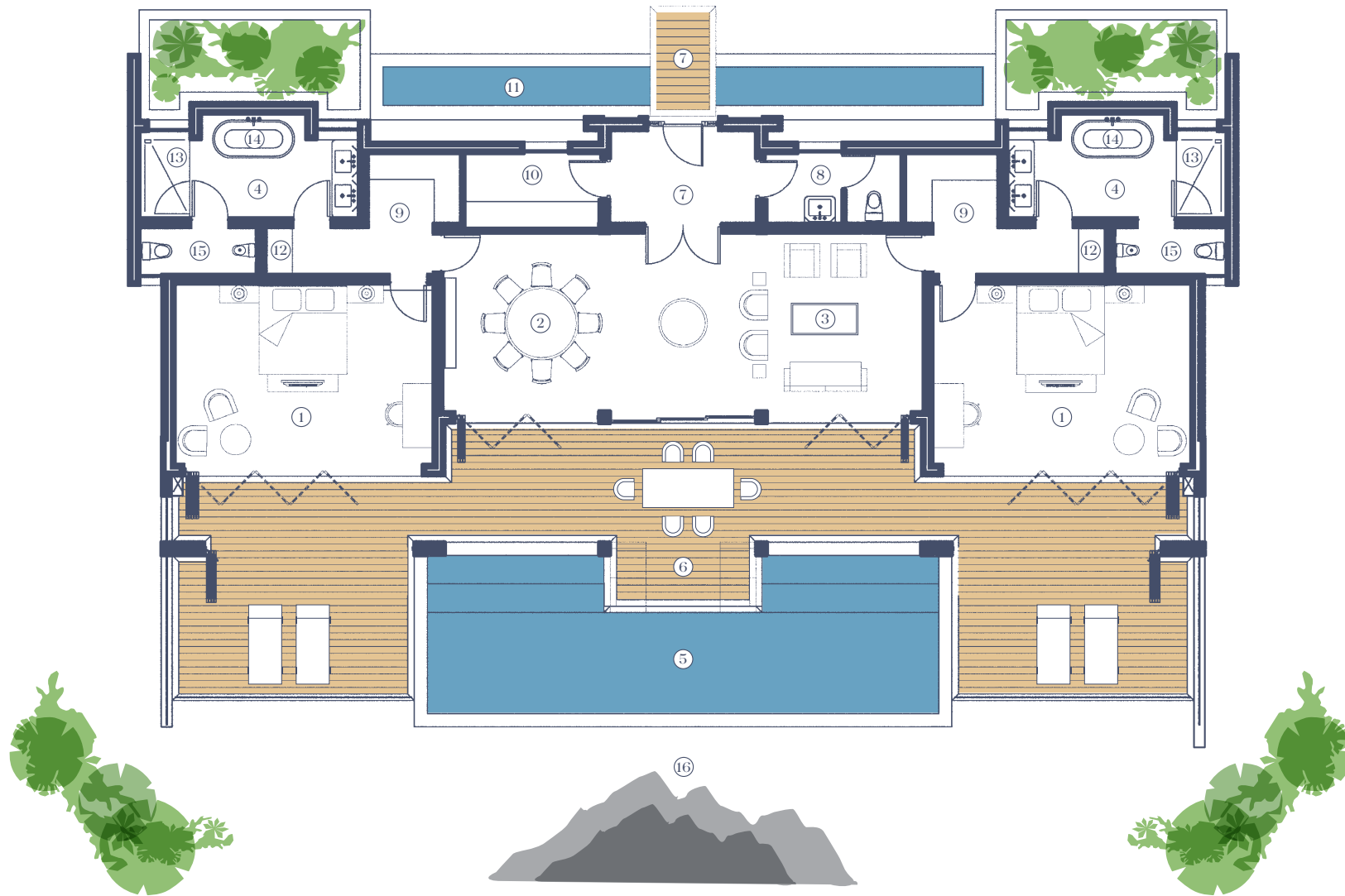
DELAIRE
GRAFF
 LODGES & SPA
SUPERIOR LODGES

- | | | | |
|---|---------------------|---|------------------------|
| 1 | Bedroom | 5 | Pool terrace |
| 2 | Living room | 6 | Dressing room & closet |
| 3 | En-suite bathroom | 7 | Pond |
| 4 | Private heated pool | 8 | Interleading doors |



- ① Bedrooms
- ② Private dining space
- ③ Living room space
- ④ En-suite bathroom
- ⑤ Private heated pool
- ⑥ Private pool and dining terrace
- ⑦ Entrance
- ⑧ Guest cloak room
- ⑨ Dressing room and closet
- ⑩ Butler's kitchen
- ⑪ Fireplace
- ⑫ Pond
- ⑬ Mini bar area
- ⑭ Shower
- ⑮ Bath
- ⑯ WC
- ⑰ Vineyard and mountain views


DELAIRE
GRAFF
LODGES & SPA
PRESIDENTIAL
LODGE 1




DELAIRE
GRAFF
 LODGES & SPA

**PRESIDENTIAL
LODGE 2**

- | | |
|-----------------------------------|-------------------------------|
| ① Bedrooms | ⑨ Dressing room and closet |
| ② Private dining space | ⑩ Butler's kitchen |
| ③ Living room space | ⑪ Pond |
| ④ En-suite bathroom | ⑫ Mini bar area |
| ⑤ Private heated pool | ⑬ Shower |
| ⑥ Private pool and dining terrace | ⑭ Bath |
| ⑦ Entrance | ⑮ WC |
| ⑧ Guest cloak room | ⑯ Vineyard and mountain views |